



COLOR & FRAGRANCE

# TRENDS & INFLUENCES

AUTUMN / WINTER **2024 - 2025**

SPRING / SUMMER **2025**





## INTRODUCTION TO THE SEASON

**“I RETURN TO MYSELF AND DISCOVER A WORLD”**

JOHANN WOLFGANG VON GOETHE (1749-1832)

---

A candle's soft light serves as a beacon guiding us back home to ourselves, to tranquility, self-love and self-expression.

On this journey of personal discovery, we build a bridge that connects the inner self to the outer world, sharing this connection through the beautiful balance of wax, color and fragrance.

Our new season's creations are designed to inspire your own product development, reminding us that love, in all its forms, is indeed the cure.

Let's light a candle again, embarking on this inward journey to reveal the hidden universe within us.

As Gautama Buddha wisely stated, “Be a light unto yourself.”

Klaus Meyer-Oetzmann  
Candle Perfume & Candle Essence



## FULL MOON MYSTERY

COLOR 16410-60-6  
FRAGRANCE 16140-401-5

## INDIAN INCENSE

COLOR 16414-60-6  
FRAGRANCE 16001-401-5

## OLIBANUM CINNAMON

COLOR 16412-27-6  
FRAGRANCE 16139-401-5

## DESERT SOUND

COLOR 16413-10-6  
FRAGRANCE 15852-401-5



## Autumn 2024

# Soulful Sanctum

Enter the mesmerizing world of the Soulful Sanctum, where a tapestry of sensorial enchantment awaits. Immerse in a realm where light, color, and imagination intertwine, igniting endless possibilities on the creative journey.

As the season unfolds, vibrant oranges rise above the horizon, casting a radiant glow that outshines the golden hues. They dance alongside vivid pinks, purples, and yellows, infusing design with warm and elegant allure. Surrender to the allure of the unknown and allow the vibrant palette to envelop. Indulge in the harmonious symphony of hues that captivate the senses and evoke an array of emotions. Within the Soulful Sanctum, a sanctuary without limits, creativity flourishes, and artistic expression knows no bounds.

## FRAGRANCE

Indulge your senses with oriental fragrances that awaken the spirit, enveloping your space with the rich scents of precious woods, oud, and incense. These captivating aromas create an atmosphere of tranquility and introspection, turning your home into a sanctuary of serenity.

### FULL MOON MYSTERY

Cosmic Aura; Oud - Cedarwood - Fir Balsam

### INDIAN INCENSE

Reflective Tranquility; Myrrh & Sandalwood - Musk & Champaca - Benzoe & Patchouli

### OLIBANUM CINNAMON

Enchanting Serenity; Olibanum - Cinnamon - Coconut

### DESERT SOUND

Ethereal Sanctuary; Bergamot - Oud - Sandalwood



## FOREST BATHING

COLOR 16415-70-6  
FRAGRANCE 16142-401-6

## CRANBERRY PINE

COLOR 16416-70-7  
FRAGRANCE 16143-401-2

## SNOWY SPRUCE

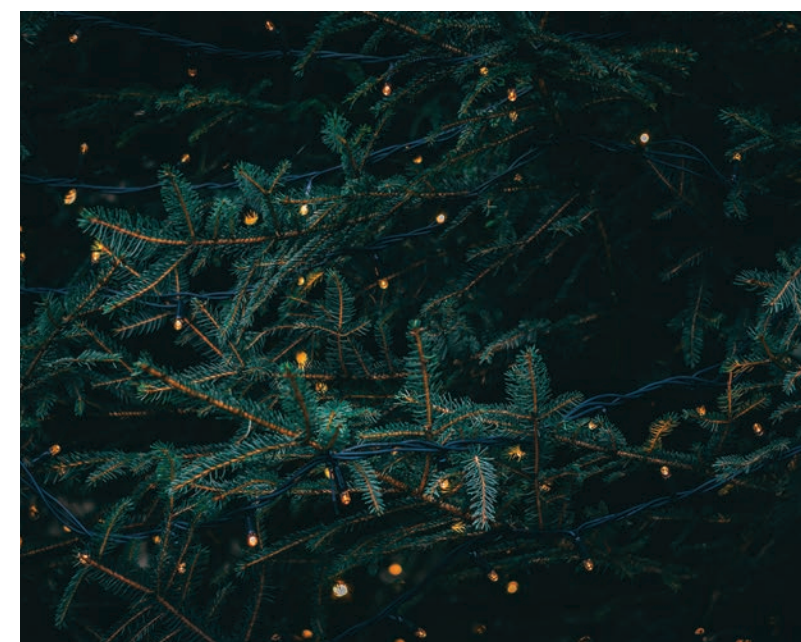
COLOR 16417-40-6  
FRAGRANCE 13770-401-6

## PALO SANTO

COLOR 16433-01-6  
FRAGRANCE 14000-401-6



Photo: Pit Ruge



## Winter 2024/ 2025

La Forêt

La Forêt captures the ultimate essence of a trend that embraces the elegance of nature, offering a fresh expression of eco-colors that blend the unexpected and the familiar. This trend embodies a raw luxe vibe for the home, drawing inspiration from circularity and low-impact living. Rooted in the natural world, La Forêt reimagines traditions and materials, showcasing a poetic mix of textures and celebrating eco innovations.

The color trend in La Forêt exudes effortless elegance. Greige, a combination of beige and grey creates a sophisticated backdrop while dark green adds an enchanting touch to interior design and home decor. Opulent fabrics like velvet and shiny silk enhance the tactile experience, while indigenous textured patterns inspired by designs add depth and character. These elements take inspiration from the richness of forests, promoting an overall sense of well-being, within homes.

## FRAGRANCE

The fragrance trend in La Forêt draws inspiration from the Japanese art of forest bathing. Perfumers capture the natural benefits of forests, creating scents that evoke a sense of wellbeing. These forest-inspired fragrances unveil various facets of the forest throughout the day and seasons, providing a calming and relaxing experience.

### FOREST BATHING

Clarity; Spruce Needle & Bark - Fir Balsam - Oakmoos, Oakwood

### CRANBERRY PINE

Rejuvenation; Pine & Fir Balsam - Blackberry, Raspberry - Sandalwood, Vanilla

### SNOWY SPRUCE

Peace; Ozonic & Moss - Mint & Pine - Fir Balsam & Spruce Needles

### PALO SANTO

Harmony; Birch Tar - Myrrh - Vanilla

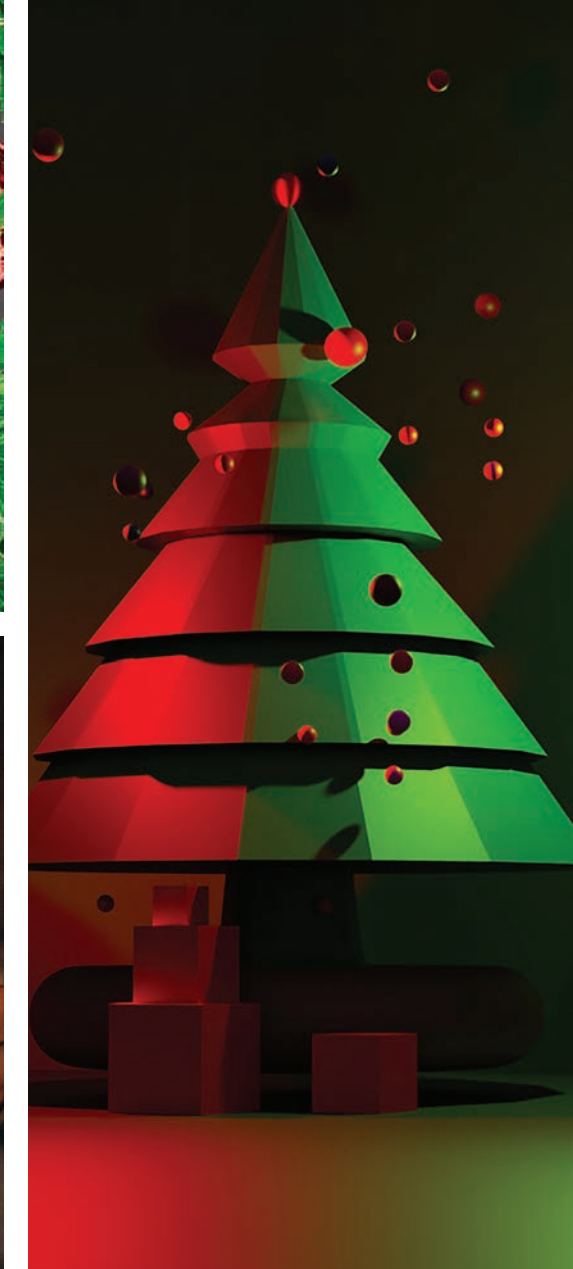


COLOR	16419-50-7
FRAGRANCE	16144-401-5

COLOR 16420-30-6  
FRAGRANCE 16076-401-5

COLOR	16422-70-6
FRAGRANCE	12810-401-3

COLOR	16423-27-6
FRAGRANCE	15495-401-4



Christmas Remix

In the world of colors and textures, this trend fearlessly challenges norms inviting you to embrace a way of expressing yourself. Explore a vibrant spectrum of deep, full-bodied hues that lay a resolute foundation, defying the constraints of tradition. Drawing inspiration from the ancient extraction of muddy, earthy tones, these unconventional shades exude an authentic essence and essential charm. Infusing spaces with irresistible allure, they beckon you to embark on a transformative journey of self-discovery and unleash your boundless creative spirit.

Fragrances mix ancient traditions with a modern twist. Discover enchanting combinations with myrrh, tonka, oud, eucalyptus rose, or even cannabis, blending the familiarity of tradition with contemporary elements. These fragrances create an immersive sensory experience, inviting you to embrace the harmonious fusion of past and present.

Mystic Vibes; Honey & Almond - Myrrh & Camphor - Tonka & Vanilla

Enchanted Reverie; Lychee - Rose Absolute - Cannabis & Leather

Rebel's Paradise: Grapefruit &amp; Cannabis - Rhubarb, Vetiver - Elemi, Tolu Balsam

Zen Escape; Eucalyptus - Rosemary - Cedarwood



## PISTACCHIO

COLOR 16424-70-6  
FRAGRANCE 16155-401-1

## CACAO VANILLA

COLOR 16425-27-6  
FRAGRANCE 16149-401-1

## ARONIA CASSIS

COLOR 16426-60-6  
FRAGRANCE 16147-401-2

## FAIRYTALE FRUITS

COLOR 16427-60-6  
FRAGRANCE 16145-401-2



## Spring 2025

# Sweet Rave

Welcome to the Pastel Metaverse and immerse yourself in a vibrant world of sweet nostalgia and 90s-inspired design. Embark on a sensory journey through a prismatic kaleidoscope of colors and encounter inviting sensory shades that beckon a moment of indulgence. The gentle touch of warm minimalism and delicate textures envelops, creating an atmosphere of refined elegance.

Explore a diverse array of cosmetic hues that offer a sensory experience, engaging both touch and smell. This trend features a palette of subtle and nuanced shades, ranging from creamy yellow to soft lilac with a subtle pink infusion. The fusion of grey and lilac creates a floral and fragrant resonance that symbolizes beauty, evoking the essence of dried flowers and nostalgic candy aromas.

## FRAGRANCE

Let the fragrances of the Pastel Metaverse transport you back to the 90s with gourmand scents inspired by sweets and candies. Indulge in the sweet and playful fragrances that evoke memories of the past while infusing a modern twist into your olfactory experience.

## PISTACCHIO

The Cool Kid; Almond - Fig- Vanilla

## CACAO VANILLA

Teen Spirit; Chocolate & Milk - Coffee & Clove - Vanilla & Musk

## ARONIA CASSIS

Berry Charm; Red Currant - Raspberry - Vanilla & Musk

## FAIRYTALE FRUITS

Sweet Whisper; Bee's Honey - Forest Berries - Vanilla & Moss



## SUMMER MELON

COLOR 16428-35-6  
FRAGRANCE 16146-401-2

## AFTERNOON DELIGHT

COLOR 16429-50-6  
FRAGRANCE 16127-401-3

## LADYLIKE

COLOR 16430-50-6  
FRAGRANCE 15853-401-4

## JAPAN BLOSSOM

COLOR 16432-60-6  
FRAGRANCE 16148-401-4



## Summer 2025

# Beachside Boho

Beachside Boho celebrates the bohemian lifestyle, where travel, culture, and nature converge to create a vibrant and eclectic space.

The color palette reflects the serene beauty of a sunset seaside, with soft rosa, blue, and sage setting a calming backdrop. Vibrant pops of pink add energy and vitality, creating an enchanting atmosphere. Let the beachy vibes and the allure of a tropical sunset inspire your imagination, transforming your living space into a blissful retreat where every moment feels like a magical escape.

## FRAGRANCE

Transport your senses to a world of tranquility and familiarity with the gentle scent of light summer fruits and blooming bouquets. These fragrances beautifully complement the retro vibe of Beachside Boho, adding an extra layer of sensory delight that enhances the boho spirit.

### SUMMER MELON

Sun-Kissed Delight; Melon - Cucumber - Sugared Vanilla

### AFTERNOON DELIGHT

Mint Serenade; Cacao - Spearmint - Vanilla

### LADYLIKE

Summer Flower Symphony; Ozonic - Gardenia - Patchouli

### JAPAN BLOSSOM

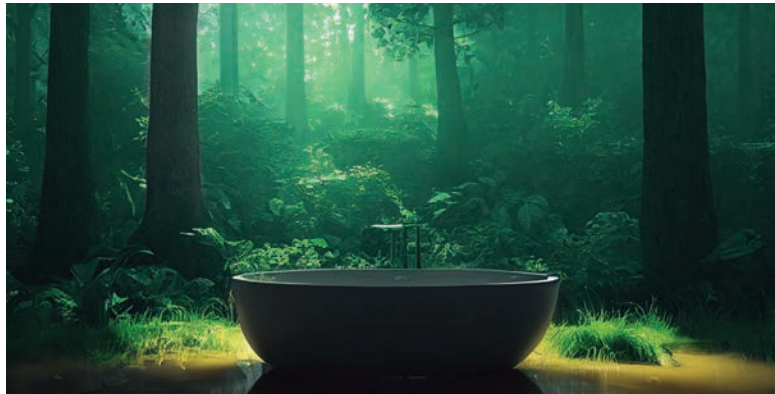
Sakura Sunset; Rice Milk - Cherry Blossom - Vanilla



COLOR & FRAGRANCE

TRENDS & INFLUENCES

AUTUMN / WINTER 2024 - 2025  
SPRING / SUMMER 2025



AUTUMN 2024

Soulful  
Sanctum

WINTER 2024/2025

La Forêt

WINTER 2024/2025

Christmas  
Remix

SPRING 2025

Sweet Rave

SUMMER 2025

Beachside  
Boho

DESERT SOUND  
COLOR 16413-10-6  
FRAGRANCE 15852-401-5

OLIVEBARK  
CINNAMON  
COLOR 16412-27-6  
FRAGRANCE 16139-401-5

INDIAN INCENSE  
COLOR 16414-60-6  
FRAGRANCE 16001-401-5

FULL MOON  
MYSTERY  
COLOR 16410-60-6  
FRAGRANCE 16140-401-5

PAJO SANTO  
COLOR 16438-01-6  
FRAGRANCE 14000-401-6

SNOWY SPRUCE  
COLOR 16417-40-6  
FRAGRANCE 13770-401-6

CRANBERRY PINE  
COLOR 16416-70-7  
FRAGRANCE 16143-401-2

FOREST BATHING  
COLOR 16415-70-6  
FRAGRANCE 16142-401-6

TURKISH SPA  
COLOR 16429-27-6  
FRAGRANCE 15195-401-4

CANNABIS  
COLOR 16422-70-6  
FRAGRANCE 12810-401-3

OLD & ROSES  
COLOR 16420-30-6  
FRAGRANCE 16076-401-5

MYRRH &  
TONKA FF  
COLOR 16419-50-7  
FRAGRANCE 16144-401-5

FAIRYTALE  
FRUITS  
COLOR 16427-60-6  
FRAGRANCE 16149-401-2

ARONIA CASSIS  
COLOR 16426-60-6  
FRAGRANCE 16147-401-2

CACAO VANILLA  
COLOR 16425-27-6  
FRAGRANCE 16149-401-1

PISTACHIO  
COLOR 16424-70-6  
FRAGRANCE 16155-401-1

JAPAN BLOSSOM  
COLOR 16432-60-6  
FRAGRANCE 16146-401-4

LADYLIKE  
COLOR 16430-50-6  
FRAGRANCE 15853-401-4

AFTERNOON  
DELIGHT  
COLOR 16428-35-6  
FRAGRANCE 16127-401-3

SUMMER MELON  
COLOR 16428-35-6  
FRAGRANCE 16146-401-2

PLEASE NOTE, ONLY THE ENCLOSED  
COLOR CHIPS REPRESENT THE  
EXACT BEKRO TREND COLORS.





ADDING VALUE TO CANDLES

**BEKRO Chemie GmbH & Co. KG**

Industriestraße 104  
66802 Überherrn  
Germany

- +49 (0)68 36/9198-0
- +49 (0)6836/9198-10
- info@bekro.de
- [www.bekro.de](http://www.bekro.de)